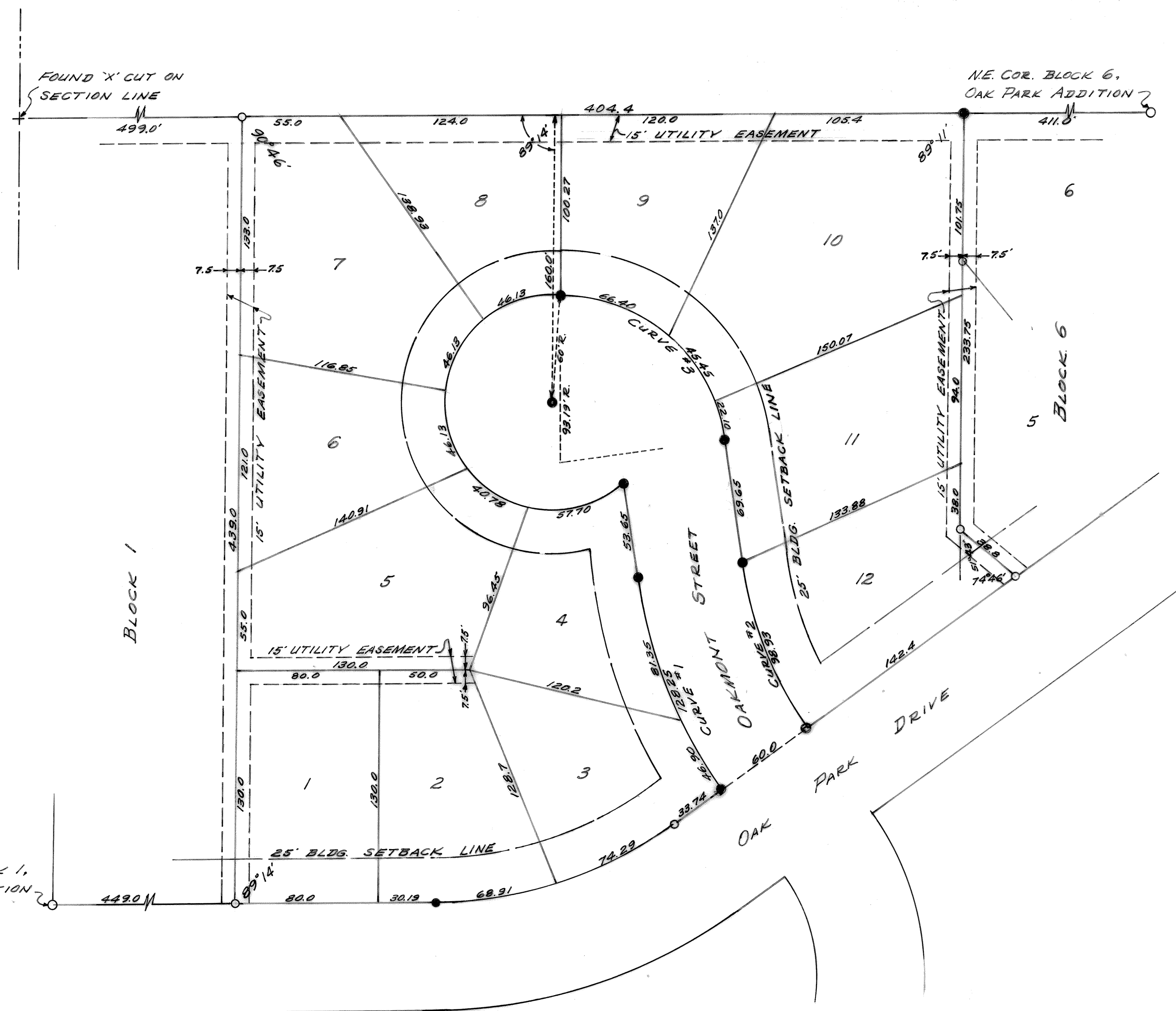


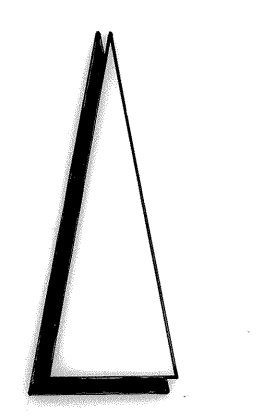
# OAK PARK COURT ADDITION

A REPLAT OF BLOCK 5, AND LOTS 1,2,3 AND 4, BLOCK 6,  
OAK PARK ADDITION TO McPHERSON, KANSAS.

1637  
State of Kansas, McPherson Co., SS  
This instrument was filed for record  
on the 21 day of April, 1976  
3:00 p.m. at the office of the  
Register of Deeds, McPherson, Kansas  
Page 1A on page 24  
Rosalie Nelson  
Register of Deeds



S.W. COR. BLOCK 1,  
OAK PARK ADDITION



SCALE: 1" = 50'

○ - IRON PIN FOUND  
● - IRON PIN SET

NOTE: ALL DISTANCES SHOWN ON  
CURVES ARE ARC DISTANCES.

### CURVE DATA:

CURVE #1	CURVE #2	CURVE #3
A° 28° 0'	A° 28° 0'	A° 82° 20' 30"
D° 21° 50' 24"	D° 28° 19' 19"	D° 61° 28' 58"
R° 262.43'	R° 202.43'	R° 93.19'
T° 65.43'	T° 50.47'	T° 81.5'
L° 128.25'	L° 98.93'	L° 138.95'

### CITY ENGINEER'S CERTIFICATE AS TO STREETS:

STATE OF KANSAS }  
COUNTY OF MCPHERSON } SS  
I, Charles E. Stary, DO HEREBY CERTIFY THAT ALL MATTERS PERTAINING TO ARTERIAL STREET REQUIREMENTS AS PRESCRIBED IN THE REGULATIONS GOVERNING PLATS ADOPTED BY THE GOVERNING BODY OF THE CITY OF MCPHERSON, KANSAS, INsofar AS THEY PERTAIN TO THE SUBJECT PLAT, HAVE BEEN COMPLIED WITH.  
I FURTHER CERTIFY THAT THE REQUIRED BOND IS POSTED FOR THE COMPLETION OF THE IMPROVEMENTS COVERING ALL STREETS INCLUDING STORM SEWERS AND OTHER PUBLIC WORKS NOT UNDER FEDERAL, STATE, OR COUNTY COMPLETION OBLIGATIONS.  
I FURTHER CERTIFY THAT THE STREET NAMES HAVE BEEN EXAMINED BY ME AND FOUND TO COMPLY WITH THE CITY OF MCPHERSON REGULATIONS.  
Charles E. Stary  
CITY ENGINEER  
DATED THIS 12<sup>th</sup> DAY OF April, 1976.

### CERTIFICATE AS TO DOMESTIC WATER AND SANITARY SEWER SYSTEMS:

STATE OF KANSAS }  
COUNTY OF MCPHERSON } SS  
I, Don Gerard, DO HEREBY CERTIFY THAT THE REQUIRED BOND IS POSTED FOR COMPLETION OF THE IMPROVEMENTS COVERING SANITARY SEWAGE SYSTEM AND/OR SEWER LINES AND DOMESTIC WATER SUPPLY SYSTEM AND/OR DISTRIBUTION LINES UNDER MY JURISDICTION, BASED ON ENGINEER'S PLANS AND SPECIFICATIONS PREPARED BY A REGISTERED ENGINEER AND APPROVED BY ALL PUBLIC AUTHORITIES HAVING JURISDICTION.  
Don Gerard  
WATER & ELECTRIC SUPPLY OR CITY ENGINEER  
DATED THIS 12<sup>th</sup> DAY OF April, 1976.

### OWNERS' CERTIFICATE AND DEDICATION:

STATE OF KANSAS }  
COUNTY OF MCPHERSON } SS  
THIS IS TO CERTIFY THAT WE, "OAKMONT OF MCPHERSON," A PARTNERSHIP CONSISTING OF ALFRED S. HAWKINSON, KEITH SWINEHART, DANIEL L. TAPPEN AND VICTOR H. LOEBSACK, ARE THE OWNERS OF THE LAND DESCRIBED IN THE ADDITION AND/OR PLAT AND THAT WE HAVE CAUSED THE SAME TO BE SURVEYED, SUBDIVIDED AND REPLATED AS INDICATED HEREIN, FOR THE USES AND PURPOSES HEREIN SET FORTH, AND DO HEREBY ACKNOWLEDGE AND ADOPT THE SAME UNDER THE STYLE AND TITLE HERON INDICATED. WE FURTHER CERTIFY THAT ALL STREETS AND EASEMENTS ARE FOR THE USE OF THE PUBLIC FOR UTILITIES, SEWERS, DRAINAGE AND CONVENIENCE AND ARE DEDICATED FOR SAME. PARTNERS D/B/A "OAKMONT OF MCPHERSON."  
Alfred S. Hawkins Keith Swinehart  
Daniel L. Tappen Victor H. Loebsock  
DATED THIS 12<sup>th</sup> DAY OF April, 1976.

### NOTARY CERTIFICATE:

STATE OF KANSAS }  
COUNTY OF MCPHERSON } SS  
I, Helen Bender, A NOTARY PUBLIC IN AND FOR SAID COUNTY, IN THE STATE AFORESAID, DO HEREBY CERTIFY THAT ALFRED S. HAWKINSON, KEITH SWINEHART, DANIEL L. TAPPEN AND VICTOR H. LOEBSACK, PARTNERS D/B/A "OAKMONT OF MCPHERSON", PERSONALLY KNOWN TO ME TO BE THE SAME PERSONS WHOSE NAMES ARE SUBSCRIBED TO THE FOREGOING INSTRUMENT AS SUCH OWNERS, APPEARED BEFORE ME THIS DAY IN PERSON AND ACKNOWLEDGED THAT THEY SIGNED AND EXECUTED SAID PLAT AS THEIR FREE AND VOLUNTARY ACT FOR THE USE AND PURPOSES HEREIN SET FORTH.  
GIVEN UNDER MY HAND AND NOTARIAL SEAL THIS 15<sup>th</sup> DAY OF April, 1976.  
Helen Bender  
NOTARY PUBLIC  
MY COMMISSION EXPIRES June 4, 1978

### SURVEYOR'S CERTIFICATE:

STATE OF KANSAS }  
COUNTY OF MCPHERSON } SS  
THIS IS TO CERTIFY THAT I, Gene D. Sickmon, HAVE SURVEYED, SUBDIVIDED AND REPLATED THE FOLLOWING DESCRIBED PROPERTY,  
ALL OF BLOCK 5, AND LOTS 1, 2, 3 AND 4, BLOCK 6, OAK PARK ADDITION TO MCPHERSON, KANSAS,  
AS SHOWN BY THE PLAT WHICH IS A CORRECT REPRESENTATION OF SAID SURVEY, SUBDIVISION AND REPLAT. ALL DISTANCES ARE SHOWN IN FEET AND DECIMALS THEREOF. ALL LOT CORNERS ARE MARKED WITH IRON PINS AND THE CONTROL POINTS ARE MARKED WITH IRON PINS IN CONCRETE.  
GIVEN UNDER MY HAND AND SEAL AT MCPHERSON, KANSAS THIS 8<sup>th</sup> DAY OF APRIL, 1976.  
Gene D. Sickmon  
REGISTERED SURVEYOR  
KANSAS  
LS-85  
EXPIRES 12-31-78

### COUNTY CLERK AND CITY CLERK CERTIFICATE:

STATE OF KANSAS }  
COUNTY OF MCPHERSON } SS  
WE THE UNDERSIGNED, THE COUNTY CLERK OF MCPHERSON COUNTY, KANSAS, AND THE CITY CLERK OF THE CITY OF MCPHERSON, KANSAS, DO HEREBY CERTIFY THAT THERE ARE NO DELINQUENT GENERAL TAXES, NO UNPAID CURRENT GENERAL TAXES, NO UNPAID FORFEITED TAXES, AND NO REDEEMABLE TAX SALES AGAINST ANY OF THE LAND INCLUDED IN THE ANNEXED PLAT.  
WE FURTHER CERTIFY THAT WE HAVE RECEIVED ALL STATUTORY FEES IN CONNECTION WITH THE ANNEXED PLAT.  
GIVEN UNDER OUR HANDS AND SEAL AT MCPHERSON, KANSAS, THIS 20<sup>th</sup> DAY OF April, 1976.  
Margaret Bryan COUNTY CLERK  
John Stover CITY CLERK

### CERTIFICATE AS TO SPECIAL ASSESSMENTS:

STATE OF KANSAS }  
COUNTY OF MCPHERSON } SS  
WE DO HEREBY CERTIFY THAT THERE ARE NO DELINQUENT OR UNPAID CURRENT OR FORFEITED SPECIAL ASSESSMENTS OR ANY DEFERRED INSTALLMENTS THEREON THAT HAVE NOT BEEN APPOINTED AGAINST THE TRACT OF LAND INCLUDED IN THE PLAT.  
Margaret Bryan COUNTY CLERK  
John Stover CITY CLERK  
DATED AT MCPHERSON, KANSAS, THIS 20<sup>th</sup> DAY OF April, 1976.

### FILED IN OFFICE OF COUNTY REGISTER OF DEEDS:

BE IT KNOWN, THIS INSTRUMENT WAS FILED IN THE OFFICE OF THE REGISTER OF DEEDS OF MCPHERSON COUNTY, KANSAS THIS 21<sup>st</sup> DAY OF April, 1976, AT TIME 2:22 P.M.  
FILING FEE: \$10.00  
Rosalie Nelson  
REGISTER OF DEEDS - MCPHERSON COUNTY, KS.

### CITY PLANNING COMMISSION CERTIFICATE:

STATE OF KANSAS }  
COUNTY OF MCPHERSON } SS  
APPROVED THIS 19<sup>th</sup> DAY OF April, 1976.  
Ray A. Law  
CHAIRMAN

### APPROVAL OF CITY ATTORNEY:

STATE OF KANSAS }  
COUNTY OF MCPHERSON } SS  
BE IT KNOWN, THAT THE ATTACHED PLAT HAS BEEN SUBMITTED TO ME AND THAT THE SAME IS HEREBY APPROVED THIS 19<sup>th</sup> DAY OF April, 1976.  
Robert Z. Stover  
CITY ATTORNEY  
CITY OF MCPHERSON, KANSAS.

### APPROVAL OF COUNTY PLANNING BOARD:

STATE OF KANSAS }  
COUNTY OF MCPHERSON } SS  
BE IT KNOWN, THAT THE ATTACHED PLAT WAS SUBMITTED TO THE PLANNING BOARD OF MCPHERSON COUNTY, KANSAS, AND WAS BY IT APPROVED ON THIS 14<sup>th</sup> DAY OF April, 1976.  
John Stover  
CHAIRMAN OF PLANNING BOARD FOR THE COUNTY OF MCPHERSON COUNTY, KANSAS.

### APPROVAL OF CITY OF MCPHERSON:

STATE OF KANSAS }  
COUNTY OF MCPHERSON } SS  
BE IT KNOWN, THAT AS DULY APPOINTED, QUALIFIED AND ACTING CLERK OF THE CITY OF MCPHERSON, KANSAS, I HEREBY CERTIFY THAT THE PLANNING COMMISSION OF THE CITY OF MCPHERSON, KANSAS RECOMMENDED THE APPROVAL OF THE ACCOMPANYING PLAT TO THE BOARD OF COMMISSIONERS OF THE CITY OF MCPHERSON, KANSAS, AND THAT SAID BOARD ADOPTED THE SAID RECOMMENDATION, AND APPROVED SAID PLAT ON THE 19<sup>th</sup> DAY OF April, 1976.  
John Stover MAYOR  
John Stover CITY CLERK  
CITY OF MCPHERSON, KANSAS.

### APPROVAL OF COUNTY ATTORNEY:

STATE OF KANSAS }  
COUNTY OF MCPHERSON } SS  
BE IT KNOWN, THAT THE ATTACHED PLAT WAS SUBMITTED TO ME AND THAT THE SAME IS HEREBY APPROVED THIS 19<sup>th</sup> DAY OF April, 1976.  
Gene L. Floy  
COUNTY ATTORNEY  
MCPHERSON COUNTY, KANSAS.

